



**Lüthi**

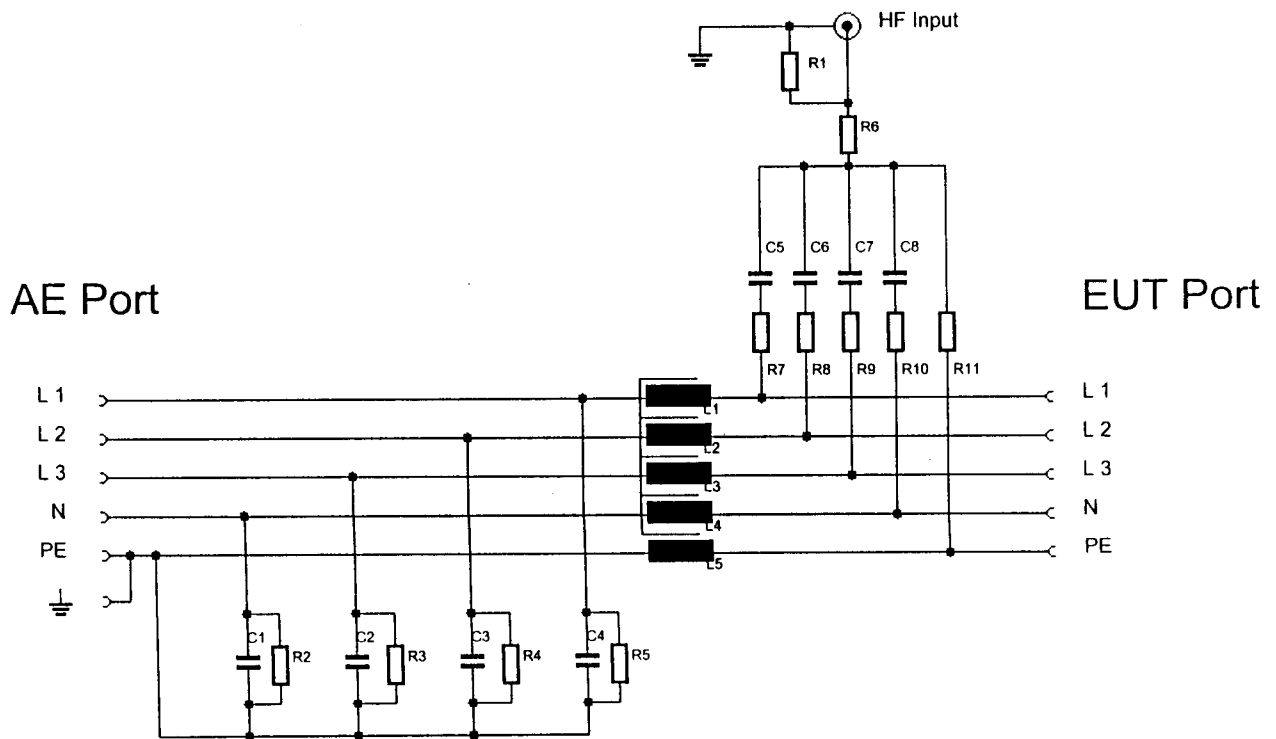
**Elektronik –  
Feinmechanik**



# Coupling-Decoupling Network C D N L-801 M5

IEC 61000-4-6

AE Port	4mm Banana
EUT Port	4mm Banana
Leads	L1+L2+L3+N+PE
Mains	3 x 230/400 V
Max. Current	16 A
IN Port	BNC 50 Ohm
Frequency range	0,15 ... 230 MHz
HF Power Dissipation	8 Watt



# SCHWARZBECK MESS - ELEKTRONIK

Tel.: +49(0)6228/1001 [www.schwarzbeck.de](http://www.schwarzbeck.de) office@schwarzbeck.de

## L 801 M5



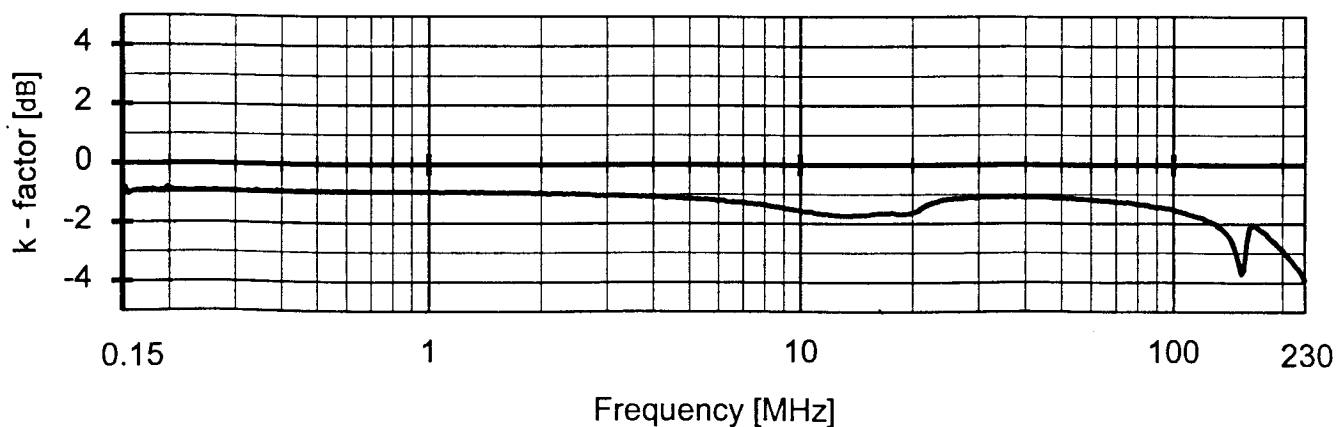
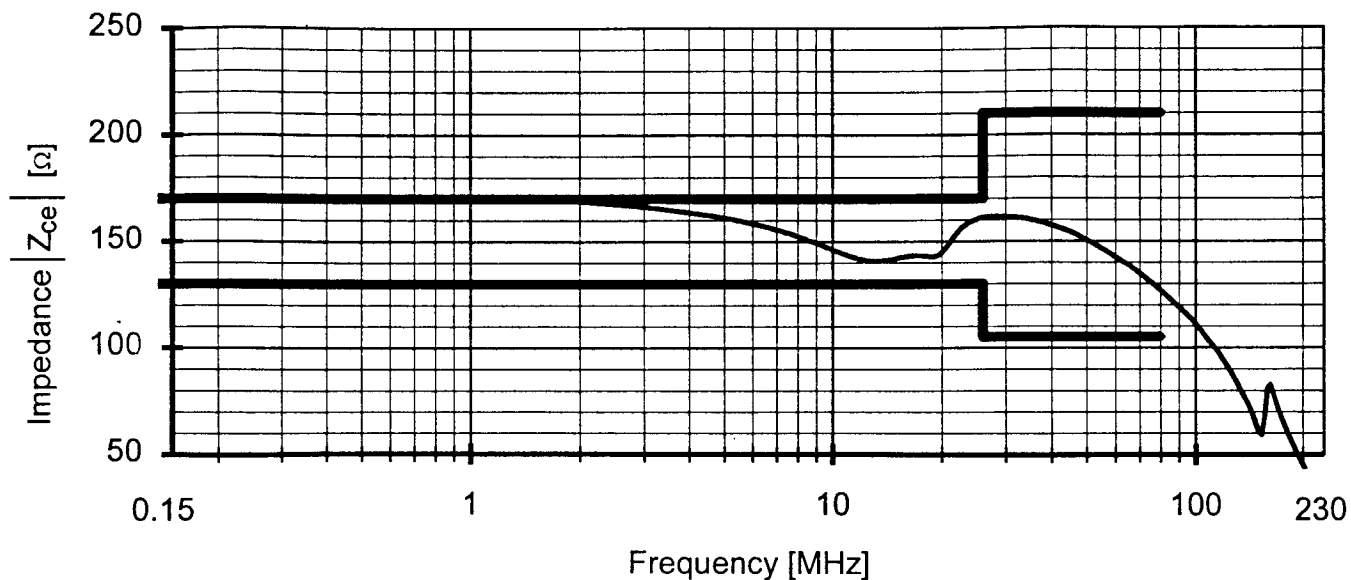
CDN, Netz 5 Leiter, 16 (20) A, L1 + L2 + L3 + N + PE, 16 A  
3 x 230 / 400 V



CDN Mains 5 leads, 16 (20) A, L1+L2+L3+N+PE, 16 A  
3 x 230 / 400 V

**CDN Impedance and K-factor  
in the frequency range 150 kHz - 230 MHz  
in a test setup according to IEC 61000-4-6**

CDN Type M5



Equipment used:

Network Analyzer Typ ZVR  
50 Ω to 150 Ω Adaptor  
50 Ω to 150 Ω Adaptor

Inv. Nr. 4110  
Inv. Nr. 4159  
Inv. Nr. 4160

Location:

Reference for K-factor  
Measurement Impedance  
Measurement K-factor

EB15

Date and time:  
2002.04.26 11:14  
2002.08.16 09:04  
2002.08.16 09:14